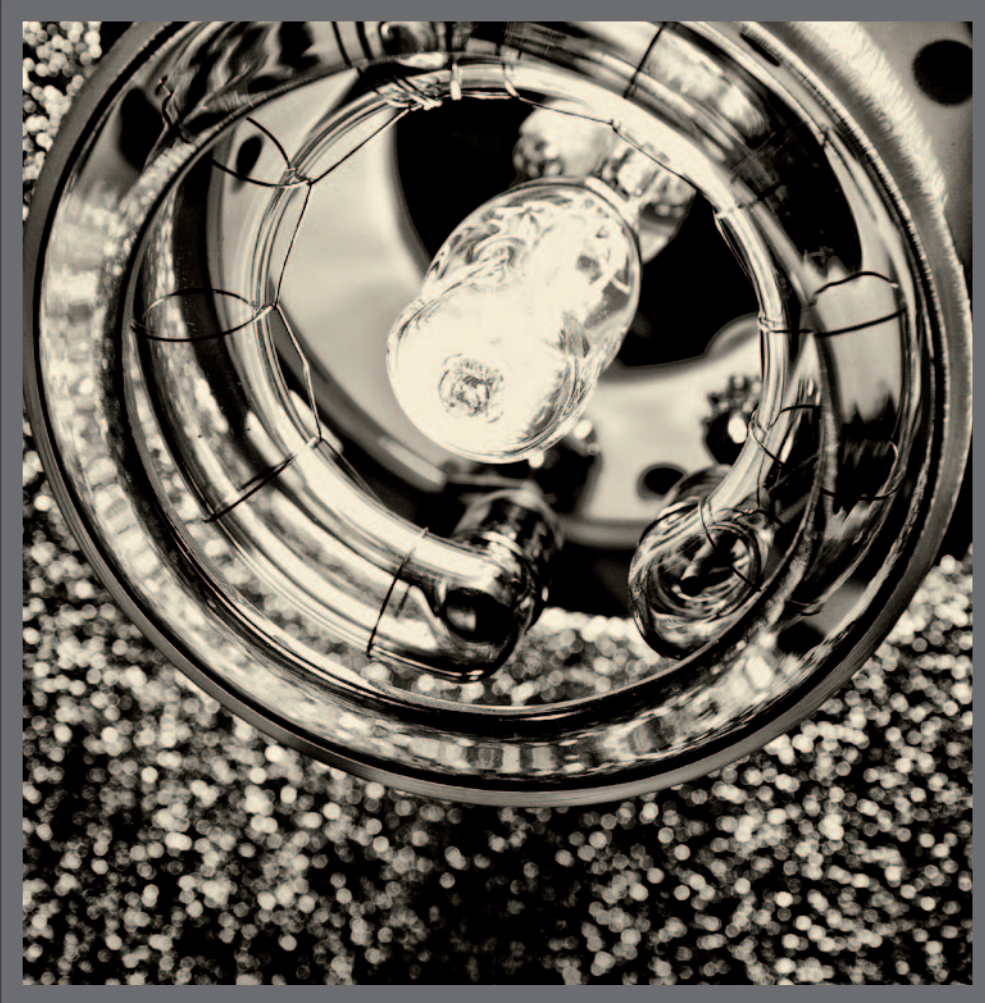




**Catalogue 2012/2013**



**STUDIO LIGHTING  
EQUIPMENT**



*DYNAPHOS is a world-known brand of professional studio lighting equipment, manufactured under high quality standards, coupled with the most innovative tendencies in the sphere. DYNAPHOS offers specialized solutions to meet the needs of both digital photography and video and cinema studios. The products of DYNAPHOS are manufactured in over 10 countries, among which USA, Germany, the United Kingdom, the Czech Republic, Italy, Korea, Romania, and China. Since 2003 the brand has been represented by Dynaphos Ltd on the Bulgarian market. During that period the company has established itself as the largest supplier of studio lighting and equipment in Bulgaria. The success of the company lies in the reliability and the affordable pricing of the DYNAPHOS products, which are highly valued by our trade partners and end buyers. In the recent years Dynaphos Ltd. has participated actively in the photographic life of the country, mostly as sponsor of a large number of photo plein airs and contests. In 2008 we launched the DYNAPHOS photo school - an initiative, aimed to help amateur photographers broaden their knowledge and introduce them to the secrets of the studio photography. The company organized a series of open lessons, lectures and other free events which helped Bulgarian photographers improve their knowledge on studio lighting.*



### At Dynaphos we carry large stocks

to ensure fast availability of many of the products we offer. The products of DYNAPHOS are also available on lease with preferential conditions from UNICREDIT BANK.

The DYNAPHOS studio lighting equipment is covered by a 24-month warranty and comes with a warranty card. The inwarranty service is maintained in the company's service in Bulgaria which guarantees short response times. DYNAPHOS also offers its customers fast replacement of the faulty items with new products or the provision of substitute lighting equipment



### The product range of DYNAPHOS includes:

Complete studio lighting kits and an opportunity to configure your own.

Studio monolight flashes - divided into four categories, according to the individual needs of our customers  
Portable kits and flash heads for outdoor photographers as well as compact flashes.

Accessories for studio flashes – a comprehensive range of accessories for light modelling such as reflectors, spots, softboxes, umbrellas, etc.

Light stands - various solutions for mounting flashes and accessories, ceiling track systems, and complete studio solutions.

Versatile solutions for product photography - photo tables and tents.

Backgrounds – paper, textile and vinyl base, and textile; solidcoloured, hand painted, printed, translucent, a total of over 1000 types. Representative of Colorama for Bulgaria.

Flash meters - exclusive representative of Sekonic, Japan for Bulgaria.

Reference charts – a rich selection of grey cards and colour charts. Representative of Danes Picta for Bulgaria.

during the period of repair. The company also offers an extended 36 month warranty against an extra cost of 2% of the item's retail price.

DYNAPHOS Service also offers a post warranty service and repair of DYNAPHOS professional lighting and other leading brands. To request post-warranty service, please contact us at: [service@dynaphos.com](mailto:service@dynaphos.com)



High-end monolight for professional use. The used advanced technology and high quality electronic components ensure excellent control and extreme stability in all operating condi-

tions. Universal solution for professional heavy duty use. The flash is compatible with all accessories from the product range of DYNAPHOS.

- Broad and precise output control – up to 1/64
- Short recycling time
- Short flash duration
- Autodump system
- Digital display for precise control
- Protective dome for the flash and modeling bulbs
- Easy replacement of the flash bulb
- Modelling lamp up to 1000W
- Active fan cooling and overheat protecting system
- Built-in receiver for radiotriggering
- Solid built body. Made of aluminum-titanium alloy
- Reversible controlling panels for using the flash hung on a pantograph

Type	ProLine 400	ProLine 800
Power output: (WS)	400	800
Guide No. (m/ISO 100)	64	90
Power adjustment:	1/54 - 1/1 (5.5 f-stops)	1/60 - 1/1 (7 f-stops), 1/10 or 1/2 f-stop
Flash duration (T=0.5)	1/2083 - 1/1176 sec	1/1724 - 1/1010 sec
Recharging time	0.2 - 2.0 sec	0.2 - 2.5 sec
Color temperature	5300 - 5700° K	
Recycling indication	LED, sound, modeling light	
Modeling light control	100% proportional, manual control, set off	
Modeling lamp	halogen 300, 650, 1000W/220V, GX6.35	
Triggering	built-in RF receiver(433MHz) with 4 channels, IR receiver, photo cell, synchro cord, test button	
Cooling	active, automatic overheat protection	
Synchro voltage	5V	
Operating voltage	210 - 240 V / 50-60 Hz	
Dimensions	12.5 x 12.5 x 36cm	12.5 x 12.5 x 38cm
Weight	2.75 kg	3.3 kg
Code	010702	010701

### ProLine 2000

High-end flash kit suitable for a big variety of tasks in a heavy duty studio.

#### The kit includes:

- 2 pcs. Proline 800 studio flash
- 1 pc. Proline 400 studio flash
- 1 pc. Octa softbox with grid 150cm
- 1 pc. Deep softbox with grid 91x122cm
- 1 pc. 50cm white beauty dish
- 2 pcs. 18cm standard reflector
- 1 pc. 18 cm Barndoor, honey comb and color filters kit
- 1 pc. Sender for the built-in radio trigger receiver
- 1 pc. ProLine syncro cables with golden connectors
- 3 pcs. Light stands 300cm
- 1 pc. Soft case for 3 flashes ProBag AFB 103
- 1 pc. Bag for 3 stands - 120cm

All the needed lamps, cables and shockproof boxes for the flashes are included.



Type	Code
ProLine 2000	011204

**N**ew model professional monolight for professional uses. Expert flash series feature a solid aluminum construction with avantgarde design, excellent ergonomics, highly stable performance and precise control with built-in backlit display. Also features an optional remote controlling for up to 7 different groups

of flashes. Excellent choice for professional studio equipment from medium to heavy duty use, suitable for a wide range of photographic assignments. The flash is compatible with all accessories from the product range of DYNAPHOS.

Type	Expert 300	Expert 600	Expert 1000
Energy (WS)	300	600	1000
Guide number (ISO 100)	60	86	106
Power range	1/32 - 1/1 (6 EV, 1/10 stepless)		
Flash duration (t=0.5)	1/800 - 1/1600		
Recycling time	0.8 - 1.8 sek	0.8 - 2.0 sek	1.0 - 2.8 sek
Colour temperature	5300 - 5700° K		
Charging indication	LED Display, BUZZ, Modeling light		
Modeling lamp variability	Proportional, Free, Off		
Modeling lamp	halogen 150W, E27	halogen 250W, E27	
Triggering method	Sync cable, Photo cell (with delay function), IR, Test button		
Cooling	active, automatic overheat protection		
Sync. voltage	5.0 V		
Operating voltage	190-240 V/50-60 Hz, built-in voltage stabilizer		
Dimensions	13.0 x 13.0 x 30cm	13.0 x 13.0 x 32cm	13.0 x 13.0 x 36cm
Weight	2.5 kg	2.8 kg	3.3 kg
Code	10433	10436	10439



### Expert 600S

The kit includes:

- 2 pcs. Expert 300 studio flash
- 1 pc. Remote control for Expert flash series
- 1 pc. 4 channel radio trigger
- 2 pcs. Light stand 280M
- 1 pc. Softbox 80x120cm
- 1 pc. Softbox 60x90cm
- 2 pcs. 17cm standard reflector

All the needed lamps, cables and shock-proof boxes for the flashes are included.



### Expert 900 Fashion

The kit includes:

- 3 pcs. Expert 300 studio flash
- 1 pc. 4 channel radio trigger
- 2 pcs. Light stand 300QB
- 1 pc. Light stand 250QB
- 1 pc. Octa softbox 120cm
- 1 pc. Strip softbox 35x140cm
- 1 pc. 50 cm beauty dish
- 1 pc. Bag for three flashes
- 1 pc. Bag for 3 stands - 120cm
- 3 pcs. 17cm standard reflector

All the needed lamps, cables and shock-proof boxes for the flashes are included.



### Expert 1500

The kit includes:

- 2 pcs. Expert 600 studio flash
- 1 pc. Expert 300 studio flash
- 1 pc. Remote control for Expert flash series
- 1 pc. 4 channel radio trigger
- 2 pcs. Light stand 300QB
- 1 pc. Light stand 250QB
- 1 pc. Softbox 80x120cm
- 1 pc. Octa Softbox 95cm
- 1 pc. 18 cm Barndoor, honey comb and color filters kit
- 3 pcs. 17cm standard reflector

All the needed lamps, cables and shock-proof boxes for the flashes are included.

Type	Code
Expert 600S	11106

Type	Code
Expert 900 Fashion	11108

Type	Code
Expert 1500	11107

**P**rofessional studio monolight with unique characteristics. Extremely short recycling time and short flash duration (up to 1/10000 sec.) Indispensable for freeze motion photography and shooting with up to 5 frames / sec. Suitable for everyday use

in a professional studio with medium and high working capacity. The monolight has a less functional version – 400Q. The flash is compatible with all accessories from the product range of DYNAPHOS.

Type	Speedster 400	Speedster 400Q
Energy (WS)	400	400
Guide No. (m/ISO 100)	65	65
Energy control	1/32 - 1/1 (6 EV, 1/10 step)	
Flash duration (t=0.5)	1/10 000 sek	
Recycle time	~0.2 - 1.0 sek	
Stroboscope	2 - 20 consecutive pulses with adjustable interval	-
High Speed Sync	yes	-
Color temperature	5500 - 5700 °K	
Recycling indication	LED, buzz, modeling lamp	
Modeling lamp variability	proportional, manual, off	
Modeling lamp	halogen 150W, E27	
Triggering	sync. cable built receiver, IR sensor, test button, photocell with activation of the first or second pulse	
Cooling	active, overheat protection	
Sync voltage	5.0 V	
Working voltage	200-240 V/50-60 Hz, built in voltage stabilizer	
Dimensions	13.6 x 12.7 x 32cm	
Weight	2.5 kg	
Code	010207	010208



### Speedster 800S

The kit includes:

- 2 pcs. Speedster 400Q short flash duration studio flash
- 2 pcs. softbox 90x90cm
- 1 pc. 4 channel radio trigger
- 2 pcs. Light stand 280M
- 2 pcs. 18cm standard reflector

All the needed lamps, cables and shock-proof boxes for the flashes are included.



### Speedster 1200S

The kit includes:

- 3 pcs. Speedster 400Q short flash duration studio flash
- 1 pc. Softbox 60x90cm
- 1 pc. Softbox 80x120cm
- 1 pc. 18cm Barndoor, honey comb and color filters kit
- 1 pc. 4 channel radio trigger
- 3 pcs. Light stand 260M
- 2 pcs. 18cm standard reflector

All the needed lamps, cables and shock-proof boxes for the flashes are included.



Nikola Borisov



Boris Bishkov

Type	Code
Speedster 800S	011116

Type	Code
Speedster 1200S	011122



**C**raftLine is a studio flash especially designed for use in small studios, passport photo studios, etc. The flash features a powerful modeling light for this class, active fan cooling which makes it suitable for use in low to medium duty studios.

Type	CraftLine 400
Energy (WS)	400
Guide number (ISO 100 18 cm reflector)	56
Power range	1/16 - 1/1 (5 EV, 1/10 step)
Flash duration (t=0.5)	1/1800 sek
Recycling time	~0.4 - 1.3 sek
Colour temperature	5500 - 5700 °K
Modeling lamp variability	proportional, off
Modeling lamp	150W/220V, halogen, E27
Charging indication	LED Display/ BUZZ/ Modeling light
Triggering method	sync, test button, photocell, IR
Sync. voltage	5.0 V
Cooling	active, overheat protection
Dimensions	13.5 x 13.5 x 23.5cm
Weight	1.75 kg
Code	010440



## CraftLine 800 Budget

Starting studio kit, mostly suitable for portrait photography. The kit is appropriate for photo amateurs as well as for professional who often shoot at locations outside the studio. If necessary the kit can be upgraded with many other light shaping modifiers and accessories from our product range.

### The kit includes:

- 2 pcs. Dynaphos Craftline 400 studio flash
- 2 pcs. 105cm Fibro shoot-through umbrella
- 2 pcs. 18cm Standard reflector
- 2 pcs. 280M Light stand – 280cm



## CraftLine 1200S

The kit is suitable for portrait and product photography as well as shooting full body portraits. The kit is a good solution for small to medium studio with low to medium working duty. If necessary the kit can be upgraded with many other light shaping modifiers and accessories from our product range.

### The kit includes:

- 3 pcs. CraftLine 400 studio flash
- 2 pcs. 60x90cm Softbox
- 1 pc. 18cm Standard reflector
- 1 pc. 18cm reflector kit with 4 honeycombs – XS, S, M and L sizes - 10°, 20°, 30° and 40°
- 3 pcs. Light stand 280M (280cm)
- 1 pc. Dynaphos AC-04 radio trigger



## CraftLine 1600 Studio

Studio kit for equipping a studio with low to medium working duty. The light shaping modifiers and accessories are especially selected for work with people.

### The kit includes:

- 4 pcs. CraftLine 400 studio flash
- 2 pcs. 60x90cm Softbox
- 1 pc. 105cm Fibro shoot-through umbrella
- 1 pc. 18cm Standard reflector
- 1 pc. 18cm reflector kit with 4 honeycombs – XS, S, M and L sizes - 10°, 20°, 30° and 40°
- 1 pc. 13cm Standard reflector
- 1 pc. 55cm Beauty dish with silver surface
- 1 pc. 55cm Honeycomb
- 4 pcs. 280M Light stand (280cm)
- 1 pc. Dynaphos AC-04 radio trigger

Type	Code
CraftLine 800 Budget	011100

Type	Code
CraftLine1200S	011101

Type	Code
CraftLine1600 Studio	011102

**E**ntry level studio monolight. New and modern construction with improved control, very precise output control, compact and lightweight design. Excellent choice for advanced photo enthusiasts

and professional studio equipment and low to moderate use duty. Suitable with almost every light shaping modifiers from the DYNAPHOS product line.

Type	Starter 200	Starter 400
Energy (WS)	200	400
Guide No. (m/ISO 100)	40	56
Energy control	1/64 - 1/1 (7 EV, 1/10 step)	
Flash duration (t=0.5)	1/2400 sek	1/1800 sek
Recycling time	0.3 - 1.2 sek	0.4 - 1.5 sek
Color temperature	5300 - 5700 °K	
Recycling indication	LED Display/ BUZZ/ Modeling light	
Modeling lamp variability	proportional/ Full/ Off	
Modeling lamp	halogen 50W, G9.5	
Trigger method	Infra red remote control/ Sync cable/ Flash test button/ Set 2-9 times flash delay	
Cooling	active, overheat protection	
Sync voltage	7.0 V	
Operating voltage	200-240 V/50-60 Hz, built in voltage stabilizer	
Dimensions	12.5 x 12.5 x 21 cm	
Weight	1.75 kg	1.9 kg
Code	010322	010324



### Starter 400 Mobile

Base level studio kit. Suitable for advanced amateurs and professionals who often work outside the studio. Optional: The reflective umbrellas can be replaced with shoot-through umbrellas with the same diameter.

#### The kit includes:

- 2 pcs. Starter 200 studio flash
- 2 pcs. Silver 105cm reflective umbrella
- 2 pcs. 13cm standard reflector
- 1 pc. AC-04 – 4 channel radio trigger
- 2 pcs. Light stand 180cm
- Bag for the kit

All the needed cables and lamps are included



### Starter 800S

Entry level studio kit with an option for upgrading. Suitable for advanced amateur and professional use with low to medium use duty.

#### The kit includes:

- 2 pcs. Starter 400 studio flash
- 2 pcs. Softbox 60x90cm
- 2 pcs. Light stand 280cm
- 1 pc. 4 channel radio trigger

Boxes, cables, model and flash bulbs are included.



### Starter 1000S

Entry level studio flash kit with broader options for creating more tricky lighting schemes. Suitable for advanced amateurs and professionals. Perfect for use with low to medium duty.

#### The kit includes:

- 2 pcs. Starter 400 studio flash
- 1 pc. Starter 200 studio flash
- 2 pcs. Softbox 60x90cm
- 1 pc. 18cm reflector kit with 4 honeycombs – XS, S, M and L - 10°, 20°, 30° and 40°
- 3 pcs. Light stand 300cm

Boxes, cables, model and flash bulbs are included.

Type	Code
Starter 400 Mobile	011114

Type	Code
Starter 800S	011116

Type	Code
Starter 1000S	011119

New generation battery powerpack. Compact design, power and speed that give you more opportunities and freedom for creating your photos. The Discovery series battery powerpacks and flash heads are the perfect solution for photographers who shoot on the field and in quickly changing light conditions which demands frequent settings change of the lightings. The Discov-

ery powerpacks feature two asymmetrical power outputs allowing work with two flash heads. Also, you can use a Discovery standard flash head which is compatible with all light modifiers from our product line or you can use a ringflash head which is the best choice for fashion and glamour photography as well as a fill light.

Type	Discovery 600	Discovery 1200
Power output (WS)	600	1200
Guide number (ISO 100)	76	108
Power adjustment	1/16 - 1/1 (5 EV, stepless) when working in A+B mode the power is asymmetrical distributed between Head A-2/3 power, Head B-1/3 power	
Flash duration (t=0.5)	1/800 - 1/1200 cek	
Recycling time	A 3.5 sek	3.0 sek 4.6 sek
Charging indication	BUZZ, LED	
Modeling lamp variability	Proportional, Free, Off	
Modeling lamp	halogen 50W, G9.5	
Triggering method	by PC cable and test button	
Cooling	active, automatic overheat protection	
Sync voltage	7.0 V	
Battery	Li-Ion, 24V/6000 mAh	
Autonomy (counts max. Power)	430	350
Weight of the pack with the battery	3.2 kg	4.5 kg
Code	156100	156200



## DISCOVERY standard flash head

Compatible with any light shaping modifiers from the Dynaphos product line.  
DYNAPHOS  
Model light: SMD LED 10w  
Weight: 0.75kg  
Ergonomic handle

Type	Code
Discovery 600 Standard Flash Head	156101
Discovery 1200 Standard Flash Head	156201



## DISCOVERY ring flash head

Compatible with various photo cameras and lenses.  
Weight: 0.9kg

Type	Code
Discovery 600 Ring Flash Head	156103
Discovery 1200 Ring Flash Head	156202



## Powerpack kit

Starting powerpack kit. Just open it and you can start doing your photographs.

Type	Code
Discovery 600 Rechargeable Power pack kit	156109
Discovery 1200 Rechargeable Power pack kit	156209



Type	Code
Li-Ion батарея 24V/ 6000 mAh	156110



Type	Code
Power cable for Discovery battery power pack	156111



Type	Code
Compact case for studio light	60109



**D**ynaphos Freelander NFL-500 is the latest addition in our range of portable battery power packs. The new model has an improved output control (1/1 to 1/16, 1/10 step), new LED indication panel, larger battery capacity and more compact standard flash head. NFL-500 is equipped with a standard flash head, battery, charger and aluminum case for the whole kit.

Type	NFL-500	
Power output (WS)	400	
Guide number (ISO 100)	66	
Power adjustment	1/16 - 1/1 (5 EV stepless)	
Flash duration (t=0.5)	1/800 - 1/1200 sek	
Recycling time	1.0 - 3.3 sek	
Color temperature	5300 - 5700 °K	
Charging indication	LED Display/ BUZZ	
Trigger method	sync, test button, triggering voltage 7.0 V	
Battery	Ni-MH, 14V/3500 mAh	
Autonomy (counts max. Power)	180/450	
Dimensions	182 x 79 x 239mm	
Weight of the pack with the battery	2.9 kg	
Code	157512	
Flash Head	Standard NFL - 400 (optional)	Ring Flash Head DC - 600
Power output (WS)	400	600
Modeling lamp	halogen G 6.35, 12V, 50W	no
Mount accessory	Dynaphos/Bowens S	no
Weight	0.7 kg	1.2 kg



Type	Code
NFL Battery	157514

## Flash triggers



### PocketWizard PLUS III

Pocketwizard Plus III is the most reliable, functional and easy to use device for radio triggering and remote shutter releasing! Pocketwizard Plus III has 32 digital channels. Whether shooting weddings, sporting events or in the studio, you can always count on a interference free working channel.

The device also features Quad-Zone triggering using four groups, allowing a grouping ignition of flashes or remote triggering of a camera. The device is compatible with the rest of the PocketWizard's radio triggers.

Type	Code
PocketWizard PLUS III	093000



### 3 in 1 Trigger PE-16 Radio Slave Kit with 1 receiver

Universal radio trigger for studio and manual flashes. The device can be used as a remote shutter release with an optional cable. Compatible with any studio flash or battery powerpacks.

Type	Code
PE-16 Receiver	092017
3 in 1 Trigger PE-16 Radio Slave Kit with 1 receiver	092013
3 in 1 Trigger PE-16 Radio Slave Kit with 2 receivers	092014



### AC-04 Radio Slave

4 channel radio trigger for use with studio flashes. Operational range of up to 20 meters. Fastest sync speed 1/200s. The device is powered by 220V electricity. The sender is compatible with the following receivers: PT-04, PR-02, DC-16 and the built-in receiver in Dynaphos Proline studio flash.

Type	Code
AC-04 Radio Slave	092020
AC-04 Receiver	092021
AC-04S Radio Slave - Sony	092019



### Dynaphos PT-04 radio trigger for manual flashes

Radio trigger for manual and studio flashes. Available in versions optimized for handheld flashes from the main flash manufacturers. 4 working channels, action range 30 m, battery power supply (battery - 23A and AAA). Sync speed up to 1/250 sec. Features an umbrella holder. Thread 1/4 " thread standard screw for tripod.

Type	Code
PT-04 Radio Slave for Canon	092010
Receiver for Radio Slave PT-04NE - Canon	090106
PT-04N2 Radio Slave for Nikon	092011
Receiver for Radio Slave PT-04N2 - Nikon	090107
PT-04S1 Radio Slave for SONY	092012



### Dynaphos DC-16 radio trigger

16 channels radio trigger for use with studio flashes and battery powerpacks. Operational range is up to 30m high. Battery power supply (23A and AAA batteries). Max. sync speed 1/250 sec. The transmitter is compatible with receivers PT-04, PR-02, AC-04 and ProLine.

Type	Code
DC-16 Radio Slave	092022
DC-16 Receiver	092023



### Dynaphos PR-02 radio trigger for manual flash

Radio trigger for manual and studio flashes. The device has 2 galvanically separated Hot Shoe connectors and 3.5mm jack for sync cable. 4 working channels. Action range - up to 30 meters, battery power supply (23A and AAA batteries). Sync speed up to 1/250 sec. Umbrella holder.

Type	Code
PR-02 kit	092005
PR-02 Flash Trigger Receiver	092006



### Pocketwizard Mini TT1 / Flex TT5

High-end radio trigger. Both models support TTL data transfer with cameras and flash made by Canon and Nikon. Encrypted digital transfer connection, big operational range and support for high speed photos (up to 8 f/s at High speed sync up to 1/8000s). USB interface for firmware update.

Type	Code
Mini TT1 Canon E-TTL	093012
Flex TT5 Canon E-TTL	093011
AC3 Controller Canon	093013
Mini TT1 Nikon i-TTL	093022
Flex TT5 Nikon i-TTL	093021
AC3 Controller Nikon	093023



### Pixel King TTL

King is a high quality radio trigger capable of transmitting TTL data and high-speed sync (up to 1/8000). Provides support for up to three groups of flashes in TTL mode allowing wireless control of the output, ISO, zoom, etc. Pixel also offers many other radio triggers., for more information visit [www.dynaphos.com](http://www.dynaphos.com).

Type	Code
Pixel King TTL for Canon - Flash Trigger Kit	090238
Pixel King TTL for Canon - Receiver	090240
Pixel King TTL for Nikon - Flash Trigger Kit	090243
Pixel King TTL for Nikon - Receiver	090244
Pixel King TTL for Sony - Flash Trigger Kit	090237
Pixel King TTL for Sony - Receiver	090239



### Pixel Rook

Pixel Rook is a high quality radio trigger that features TTL through hot-shoe and grouping function for controlling up to three different groups of flashes. The TTL through hot-shoe function allows you to keep your on camera flash in TTL mode while triggering the rest of your flashes.

Type	Code
Pixel Rook Canon - Flash Trigger Kit	090223
Pixel Rook Canon - Receiver	090227
Pixel Rook Nikon - Flash Trigger Kit	090222
Pixel Rook Nikon - Flash Trigger Kit	090226
Pixel Rook Sony - Flash Trigger Kit	090224
Pixel Rook Sony - Receiver	090228
Pixel Rook Olympus - Flash Trigger Kit	090225
Pixel Rook Olympus - Receiver	090229



**13cm / 65°**  
standard reflector with  
silver surface

Code 020101



**18cm / 60°**  
standard reflector with  
silver surface

Code 020103



**22cm / 120°**  
wide reflector with silver  
surface

Code 600014



**25.5cm / 65°**  
deep reflector with  
silver surface

Code 600015



**28cm / 45°**  
deep reflector with  
silver surface

Code 600017



**40cm / 112°**  
Beauty Dish reflector  
with silver surface

Code 020102



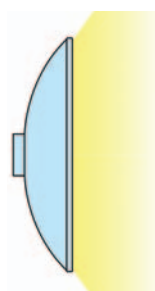
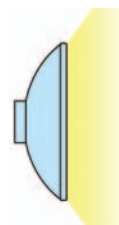
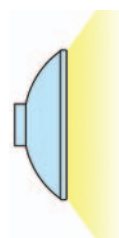
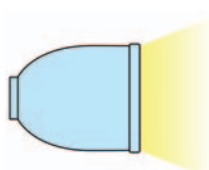
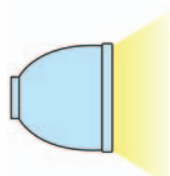
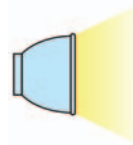
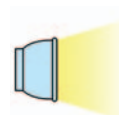
**50cm / 120°**  
Beauty Dish reflector  
with white surface

Code 600004

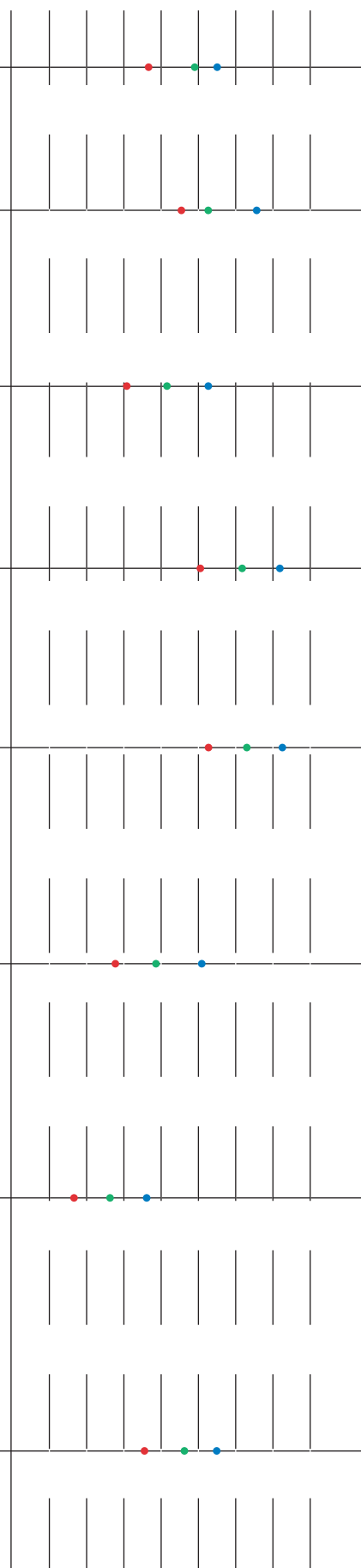


**70cm / 120°**  
Beauty Dish reflector  
with silver surface

Code 600074



300Ws  
600Ws  
1200Ws





## Reflectors

### Background reflector

The asymmetrical design directs the light toward the background without spreading it towards the subjects. Perfect for use in a small studio. Color gels or diffusive fabrics can be attached with clips.

Type	Code
Background Reflector	600013



## Snoots and honeycombs



### Optical snoot

The optical snoot concentrates the light beam. The kit is with 4 diaphragms, 4 masks and 4 colour filters. The snoot is a useful and universal accessory for any studio session. Can be used as a back-light, effect or background lighting. The big diameter of the lenses reduce the light loss. The diaphragms allow you to control the size of the light beam without changing the distance between the snoot and the illuminated subject.

Type	Code
Optical spot	030308



### Non - optical snoot

Budget and useful solution for backlighting when shooting portraits. Suitable for local light effects when shooting product photography. Directs the light into a small beam, which may vary depending on whether you use one of the two honeycombs included in the kit or without them.

Type	Code
Non-optical snoot	030201



### Honeycombs

The honeycombs reduce the light spreading angle.

Type	Code
Set of 18cm reflector with 3 honeycombs	020105
Honeycomb to 25.5cm reflector size M	600151
Honeycomb to 25.5cm reflector size S	600152
Honeycomb 28cm reflector, size M	600171
Honeycomb 28cm reflector, size S	600172
Honeycomb for Beauty Dish 50cm reflector	600005
Honeycomb for Beauty Dish 70cm reflector	600075



### Fresnel spot

You can focus the light beam and adjust the angle of the beam. Compatible for use with flash and continuous light up to 2000W.

Type	Code
Spot-fresnel	030309



### Barndoors, honeycombs and colour filters

The kit is especially made for use with a standard 18cm reflector. Useful for creating various light effects.

Type	Code
18cm Barndoor, honeycomb and color filters	030102
18cm Barndoor	030103
20cm Barndoor, honeycomb and color filters	030104



Resize Studio

The softbox is a light shaping modifier that increases the area of the light source and delivers a soft light with smooth contrast transitions. The outer and the inner diffusive surfaces produce a better light distribution and eliminate the "hot spot". Easy assembling and compact design.



Rectangular Softbox	
Dimension	Code
40 x 155cm	020308
60 x 60cm	020302/020340*
60 x 90cm	020313/020341*
70 x 100cm	020304
70 x 140cm	020312/020344*
80 x 120cm	020306/020343*
90 x 90cm	020305/020342*

\* Heat resistant softboxes. Suitable for continuous lights and studio flashes with a powerful modeling lamp.



Octagonal Softbox	
Dimension	Code
95cm	20506
120cm	20502
150cm	20507
170cm	20503



### Easy folding softbox 60X60

Perfect mobile solution for photographer who often work outside the studio. Very quick unfolding and folding. You can prepare the softbox for work within a minute. Extremely compact storage bag. Can be used with manual and studio flash with the proper adapter.

Easy Folded Softbox	
Dimension	Code
60x60cm	020606



### ProBox Series

High-end softboxes. Sturdy and light-weight design.

- Homogeneous light
- Minimal power loss throughout the whole area
- Heat-resisting fiberglass insert around the speedring
- The rods are made of Dural
- The speedring is made of Al-Mg alloy
- Speedrings for any existing mounts(Bowens, Profoto, Broncolor,etc.)

ProBox Series	
Dimension	Code
ProBox 60x80cm	020303
ProBox 100x140cm	020332
ProBox 120x180cm, flat bottom	020333
ProBox 140x200cm	020334
Terabox 190cm circular softbox	020337



Ball softbox	
Dimension	Code
55cm	600008



### Softbox with grid

Delivers a directed soft lighting. The grid reduces the light spreading angle and directs the light toward the subject. Rectangular models are equipped with masks to reduce the working surface.

Softbox with grid	
Dimension	Code
Rectangular 35 x 140cm	020311
Rectangular 40 x 60cm	020309
Rectangular 91 x 122cm	020310
Octagon 95cm	020321
Octagon 150cm	020323
Octagon 170cm	020324



### Softbox speedring adapter

The adapter allow Dynaphos softboxes to be mounted on studio flashes from other manufacturers.

Softbox Speedring	
Dimension	Code
Softbox Speedring - Broncolor	020400
Softbox Speedring - Dynaphos/Bowens	020406
Softbox Speedring - Elinchrom	020401
Softbox Speedring - Hensel	020403
Softbox Speedring - Multiblitz V-type	020402
Softbox Speedring - Profoto	020408
Universal Softbox Speedring	020404

# Umbrellas

The photo umbrella is an accessory that increases the area of the light source and creates smooth transitions between light and shadow in lighted subject. Dynaphos umbrellas are now available in a Fibro version. The Fibro umbrellas are made of



**White transparent umbrella**

Diameter	Code
85cm	030402
105cm	030401
105cm Fibro	030458
150cm Fibro	030558
180cm Fibro	030359



**White translucent box umbrella**

The closed design of the umbrella, allows you to use the maximum power of your flash without any significant loss.

Diameter	Code
109cm	030444



**White reflective umbrella**

Diameter	Code
85cm	030446
105cm	030405
105cm Fibro	030449
150cm	030448
150cm Fibro	030357
180cm Fibro	030358



**White reflective box umbrella**

Diameter	Code
91cm	030411
109cm	030407



**Silver reflective umbrella**

Diameter	Code
85cm	030404
105cm	030403
105cm Fibro	030459
109cm	031403
150cm Fibro	030447
180cm Fibro	030460



**Dual purpose umbrella**

Umbrella with a detachable upper surface. By detaching the upper surface you decide how to use the umbrella, as a white reflective or as a shoot-through umbrella.

Diameter	Code
109cm	030441



**Umbrella with golden reflective surface**

Delivers warm light tone. Suitable for beauty and nude photography.

Diameter	Code
109cm	030406



**Umbrella with stand**

Large 220cm reflective umbrella, which due to its specific shape gives homogeneous and directed lighting. By rotating the shaft you focus the light beam. Equipped with a massive stand with horizontal arm and counterweight.

Diameter	Code
220cm	030409



## Reflective disc 5 in 1

Usually used as an additional light source, fill light or as a light modifier of your lighting. Features 5 different surfaces:

### White reflective surface

Delivers a soft, diffuse light. Used mostly to fill the shady parts of the subject. The effect is similar to that of a softbox.

### Silver reflective surface

More intensive surface. Delivers a harsh light. Mostly used when the white surface doesn't reflect enough light.

### Golden reflective surface

Identical with the silver surface, but delivers a warmer light.

### Black light absorbing surface

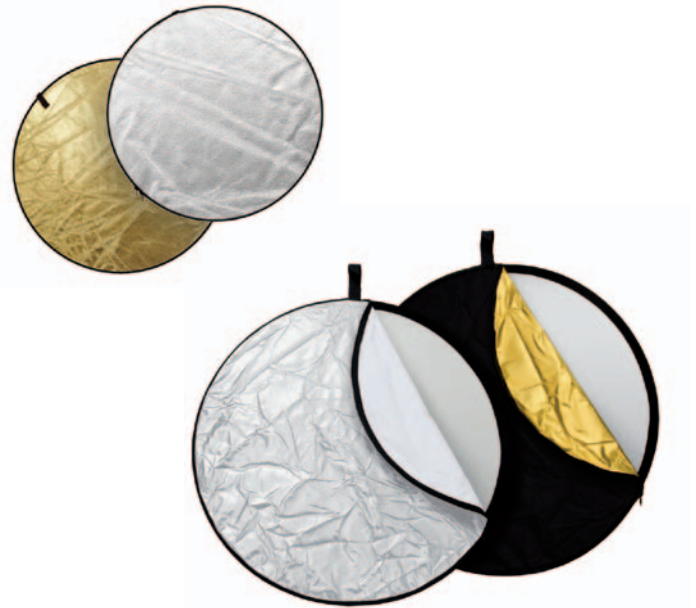
Makes the opposite of the reflective surfaces. Mostly used for shading and limiting the light from a certain direction.

### White diffusive surface

Usually is put between the light source and the subject. Creates soft diffused light with soft shadows.

## Reflective disc 2 in 1

The 2 in 1 Reflector Light Disc can be used as an additional light source. Can be used as an additional accessory in a given light set-up or to modify the existing light.



Type	Code
Reflective disc 5 in 1 - 56cm diameter	29031
Reflective disc 5 in 1 - 81cm diameter	29032
Reflective disc 5 in 1 - 110cm diameter	29033
Reflective disc 5 in 1 - 91 x 122cm	29034
Reflective disc 5 in 1 - 100 x 150cm	29035
Reflective disc 5 in 1 - 120 x 180cm	29036
Reflective disc 5 in 1 - 150 x 200cm	29037
Reflective disc 2 in 1 - 56cm silver/white	029056
Reflective disc 2 in 1 - 110cm silver/white	029058
Reflective disc 2 in 1 - 91x122cm silver/white	029060



## Studio reflector 90x180

The studio reflector features two working surface - silver and golden. Can be mounted on a light stand and positioned however you want and need. Compact in folded condition.



## Reflective disc holder

Holding arm for reflective discs. Variable length of the arm. Holding clips and a grip-head.



## Stand for reflective disc

Light stand and an extending arm for holding a reflective disc. Adjustable arm length. Clamps for mounting reflectors or backgrounds. Comfortable carrying bag.

- Maximum height: 360cm
- Minimum height 115cm
- Minimum arm length 98cm
- Maximum arm length 180cm
- Legs spread 105cm

Type	Code
Studio reflector 90x180	030413

Type	Code
Reflective disc holder	20253

Type	Code
Stand for reflective disc	20252

## Photo tent

### Photo cube tent

The photo cube tent for product photography is essential in the shooting of metal, glass and glossy surfaces. The tent limits the reflections of the surroundings and diffuses the light. The kit includes a front diffuse surface and fabric backgrounds.

Type	Code
Photo tent - cube 45x45x45cm	030417
Photo tent - cube 60x60x60cm	030428
Photo tent - cube 75x75x75cm	030416
Photo tent - cube 120x120x120cm	030429
Photo tent - cube 150x150x150cm	030418

### Conical photo tent

Due to its specific design the tent delivers homogeneous light for shooting glossy or highly reflective subjects. The double-sided zipper allow easy camera positioning. The tent can be used with product photo table 130x60x60cm which fits perfectly into the tent.

Type	Code
Photo tent - cone-cylinder 100x180cm	030415



## Product photo table

### Product photo table

The product photo table is a useful accessory when shooting subjects for catalogues, online shops, etc. when you need to separate the subject from the background. The transition between the base and the back wall of the table is very smooth. The table construction allow you to position back and low lighting as well as different types of reflectors, gobos, etc.

Type	Code
Photo object table 130x60x60cm with clamps	20905
Photo object table 130x60x60cm with clamps and top surface	20906
Photo object table 240x100x80cm	040602



20905



20906



040602





## Boom Stand

Type	Boom Stand 256D	Boom Stand 258	Boom Stand J217	Boom Stand J2140
Max. stand height	256cm	212cm	155cm	180cm
Min. height	140cm	126cm	268 cm	140cm
Max. arm length	220cm	258cm	140 cm	214cm
Adjust the angle of the nozzle	vertical / horizontal	-	-	-
Counterweight	8 kg	5 kg	6 kg	bag weights
Payload	15 kg	8 kg	6 kg	4 kg
Code	040302	040309	040301	040303

## Compact light stand

Type	6D	70QB	181M Black	181M Alu	233MX
Max height	6cm	70cm	180cm	180cm	230cm
Min. height	-	91cm	73cm	74cm	111cm
Length in folded form	-	88cm	70cm	71cm	108cm
Leg diameter	50cm	107cm	85cm	90cm	122cm
Number of sections	-	4	3	3	5
Diameter tubes	-	24, 21 and 18mm 1.0mm wall	24, 21 and 18mm, wall 0.8mm	24, 21 and 18mm, wall 1.0mm	16, 19, 22, 25 and 30mm, wall 1.0mm
Diameter legs	-	22mm	22mm	22mm	6 x 17mm
Material	steel	steel, plastic	steel, plastic	aluminum, plastic	aluminum
Plug	unalterable 16mm	16mm (5/8") threaded 1/4" and 3/8"	unalterable 16mm	16mm (5/8"), threaded 1/4" and 3/8"	unalterable 16mm, thread 3/8 "
Maximum load **	15 kg	4.0 kg	3.0 kg	3.0 kg	4.0 kg
Weight	1.0 kg	1.2 kg	2.3 kg	2.4 kg	2.7 kg
Code	040105	040219	040200	040203	20423



Type	Code
Sandbag 25x25 cm	50303
Metal light stand casters with brakes	040903



MZ-Type



QB-Type

## Air cushioned light stands

These are the most used light stands in the studio. The air cushion protects your light from damage if an unwanted fall occurs. The light stands are made of aluminum alloys. Different spigot types are available.

\* no cushioned  
\*\* maximum height

Type	250QB	300 Air	300QB	MZ-3000FP	MZ-3800FP	380HD*	C-Stand 320
Max height	250cm	300cm	300cm	285cm	365cm	380cm	320cm
Min. height	81cm	91cm	107cm	106cm	111cm	122cm	145cm
Length in folded form	78cm	88cm	104cm	103cm	108cm	119cm	145cm
Leg diameter	95cm	107cm	122cm	122cm	122cm	125cm	100cm
Number of sections	4	4	3	3	4	4	3
Diameter tubes	30, 26, 22 and 19mm, 1.0mm wall	30, 26, 22 and 19mm, 1.0mm wall	33, 28 and 23mm, wall 1.2mm	35, 30 and 25mm, wall 1.2mm	40, 35, 30 and 25mm, wall 1.2mm	38, 32, 28 and 23mm, wall 2.0mm	35, 30 and 25mm wall thickness 2.0mm
Diameter legs	22mm	22mm	22mm	22mm	22mm	25mm	25mm
Material	aluminum	aluminum	aluminum	aluminum, magnesium	aluminum, magnesium	steel	steel and aluminum-magnesium alloy
Plug	16mm (5/8") threaded 1/4" and 3/8"	unalterable 16mm, thread 3/8"	16mm (5/8") thread with 1/4" and 3/8"	16mm (5/8") thread with 1/4" and 3/8"	16mm (5/8"), thread with 1/4" and 3/8"	16mm (5/8"), thread with 1/4" and 3/8"	16mm (5/8"), extended
Maximum load **	5.0 kg	6.0 kg	7.0 kg	7.0 kg	7.0 kg	12.0 kg	10 kg
Weight	1.5 kg	1.9 kg	2.3 kg	2.4 kg	2.7 kg	5.6 kg	8.8 kg
Code	40201	40210	40211	040222	040223	40218	40701

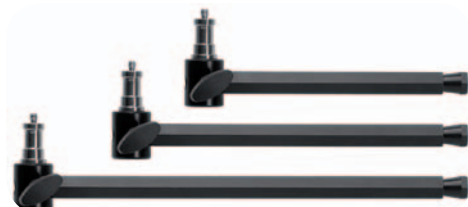


# Autopole systems

## Autopole stand

Very useful and a must have accessory for the studio. Easy mounting by stretching of between the floor and the ceiling or between two walls. Saves space and allow use of many accessories through superclamps and a big variety of different spigots, etc.

Type	Code
Autopole stand 2,10 - 3,80m	20261
Autopole kit 2 pcs. 2,10 - 3,80m	20269
Autopole stand 2,18 - 5,20m	20262



## Extension arm

Type	Code
Extension arm 200mm	202608
Extension arm 300mm	202609
Extension arm 500mm	202613



## Flexible arm

Type	Code
Flexible arm 18x550mm	202603



## Magic arm

Type	Code
Magic arm	040509



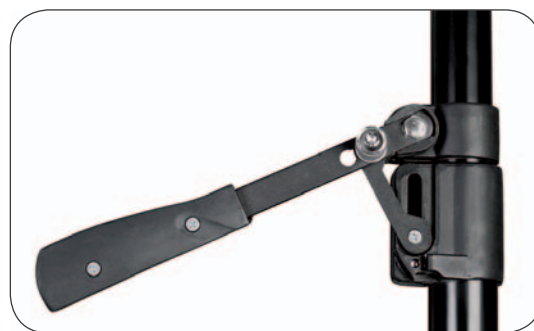
## Super clamp

Type	Code
Super clamp	202601



## Double super clamp

Type	Code
Double super clamp	202611



Type	Code
Single hooks for background system	202607



Type	Code
U-hook 20mm	202604



Type	Code
U-hook 30mm	202605



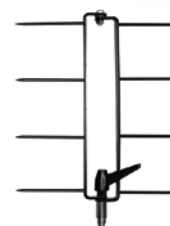
Type	Code
Clamp for autopole	040505



Type	Code
Single fork for autopole	040513



Type	Code
Double fork for autopole	040514



Type	Code
4 fits kit	202610



The rail system provides comfort and functionality for every studio. The lightings and the cables are mounted on the ceiling and save space in the studio. The lightings can be positioned anywhere in the reach of the system. The Dynaphos rail systems are fully equipped and ready for installation.

The rail system includes:

- Single longitudinal rails - 3 meters. Option for custom made sizes;
- Double crossbar - 3 meters.
- Double sliding carriage for the connection between the single and double rails;
- Sliding carriage for the connection between the rails and the pantographs;
- Cabel holders;
- Pantographs with a length of 40 cm to 200 cm, equipped with cabel holders, mechanical protection against slippage, fixing gear, spigot attachment for the lighting
- Mounting plates and anchor bolts.

You can choose from four ready proposals or make your own configuration.

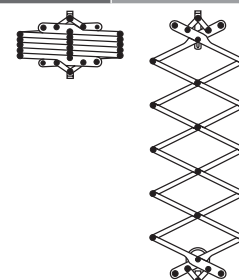


## Components for seiling track systems

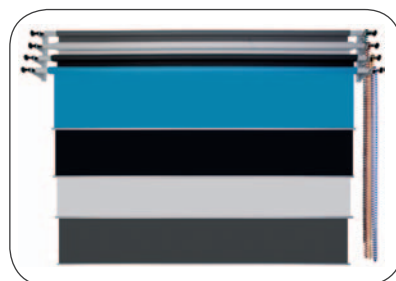
Type	Code
Pantograph for ceiling track 2m	20211
Pantograph for ceiling track 3m	20212
Sliding carriage for pantograph	20214
Double sliding carriage with brakes	20213
Single Rail 4.5m	20215
Double Rail - 3.0m	20216
Bracket for ceiling attachment	20220

## Ceiling track systems - Sets

Type	Code
Ceiling track, 2 single, 2 double, 3 pantographs	20201
Ceiling track, 2 single, 2 double, 4 pantographs	20203
Ceiling track, 2 single, 3 double, 3 pantographs	20202
Ceiling track, 2 single, 3 double, 4 pantographs	20204



## Background systems



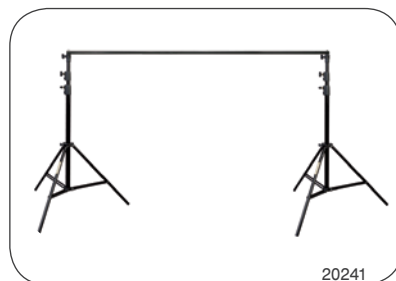
### Wall mount background support system

The wall mount support systems allow you to unwind and wind up your backgrounds via handheld chain or electrical motorized system. Suitable for use with papar and fabric backgrounds or any other backgrounds that fit to an axle between 36 and 65mm.

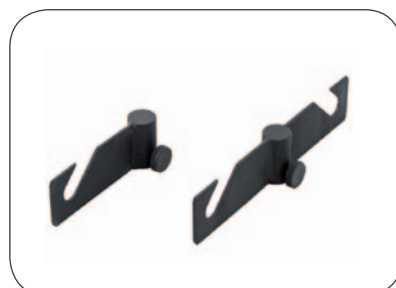
### Portable background system

Useful, convenient and easy for use and carrying the Dynaphos portable background system kit is suitable for any kind of backgrounds with or without an axle. The light stands can be used separated from the axle. The kit arrives with a comfortable bag

Type	Code
Portable background system 2.86x3.65m	20241
Portable background system 2.60x3.05m	611039



20241



### Accessories for portable back-ground systems

Useful and compact accessory. By putting it on a light stand you can hung and use your background everywhere you need.

Type	Code
Single Hook Bracket	34006
Double Hook Bracket	34005

Type	Code
Mechanical background system with 3 axles	20230
Mechanical background system with 4axles	20231
Mechanical background system kit	040501
Metal chain for mechanical background system	34004
Electrical background system with 4 axles	34015
Electrical background system kit	34008
Remote Control for electrical background system	34019
Electrical background system receiver	34009
Aluminium background axle	20244
Vertical single hook - wall mount	35007



34015



20231

## Colorama

**C**olorama is the most preferred choice for photo backgrounds in Europe. Colorama's constant quality and wide range make the brand a leader in the industry.

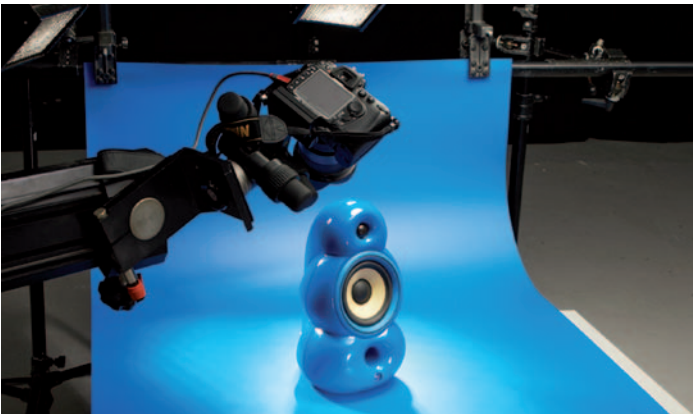
### Paper backgrounds

We offer the full Colorama catalogue of paper backgrounds. 55 different colours, available in two different sizes – 1.35m x 11m and 2.72m x 11m; Some of the colours are available in 3.55m x 30m.



### Colorama PVC backgrounds

Durable and water-resistant PVC backgrounds. Perfect solution for product photography. Available in many different colours and two types of surfaces - matt and glossy. The background is packed in a solid paper tube. Size: 100 x 130cm.



**Colorgrad** – PVC Graduated backgrounds from Colorama add an extra colour and depth to table top photography. Its easy to repeat the same effect time after time as the Colorgrads are made from durable wipe down PVC.



### Colorama Colorscrib reflective and diffusive panels

Flexible and easy for use, the Colorscrib offers you many different working surfaces, lightweight and saving space design when is not in use. Colorscrib increases your efficiency in any conditions.

#### The Colorscrib kits include:

- Carrying frame. Compact and very easy assembling.
- 4 reflective surfaces - Silver, Hard silver, White and Golden.
- Diffusive surfaces - 2 stops.
- Grip heads for mounting the frame on light stands or autopole system.
- Handle for use in hand.

Type	Code
Colorscrib 1.1 x 1.1m	139801
Colorscrib 1.1 x 2.0m	139811
Colorscrib 2.0 x 2.0m	139821



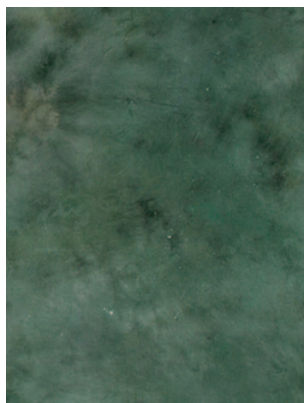


### Painted fabric backgrounds

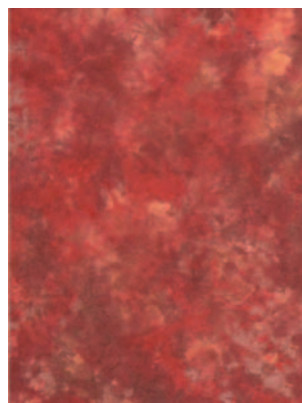
We offer over 1000 different handpainted backgrounds for many different tasks like art, wedding, children photography, etc. The backgrounds are available made of muslin or on light vinyl. Size 3m x 6m. For more information, please get in touch with us by visiting our site or send us a message.



A5077



A5170



A5081



A5089



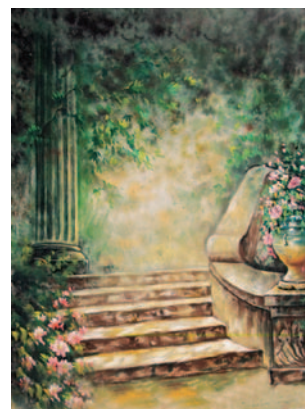
K3082



K4008

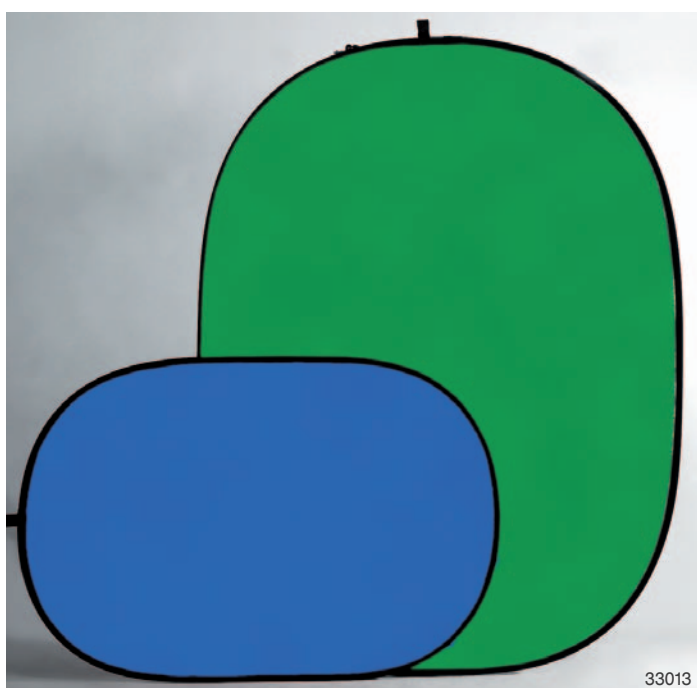


hel



K5105

Type	Code
Fold background 150 x 200cm Type 1	33003
Fold background 150 x 200cm Type 2	33015
Fold background 150 x 200cm Type 3	33016
Fold background 160 x 210 x 480cm	33004
Fold chromakey background 150 x 200cm	33013
Fold background 160 x 210 x 480cm green / blue	33014



33013



33004

# Cases & bags

## Cases for studio sets



## Bags for compact flashes

Bags with extremely low weight, big capacity and increased comfort when carrying.



Type	Code
Compact studio kit bag 60105	60212
Compact studio kit bag KB-B	60213

## Probag – Bag for studio lighting of highest quality

The Probag bags are distinctive with their light weight, increased durability and comfort when carrying.



Type	Code
ProBag AFB 101 - soft case for 2 flashes	60111
ProBag AFB 103 - soft case for 3 flashes	60113

## Light stand bags

The light stand bag protects your gear, each light stand is separated in a pocket.



Type	Code
Stand bag - 100cm	020504
Stand bag - 120cm	020508
Stand bag - 100cm	020509
Compact stand bag - 80cm	060006
Compact stands bag - 80cm	060007



## Grey cards & color charts

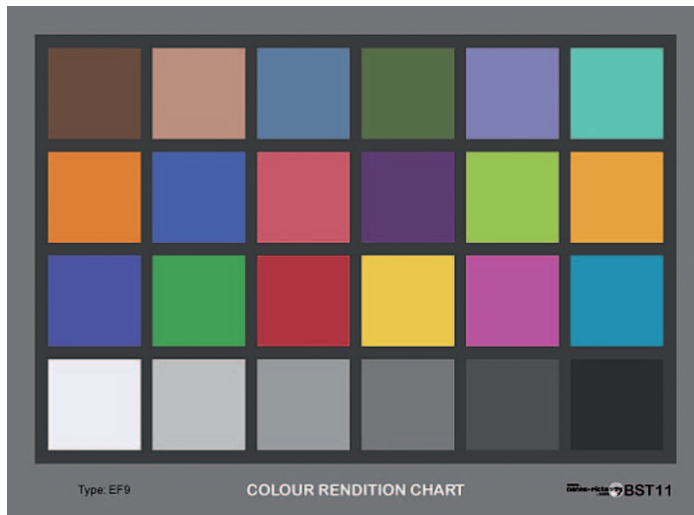
Used for achieving correct exposure or exact white balance. The grey surface reflects 18%, the white one reflects 90%.

Type	Code
Grey / White Card 10 x 12,5cm GC1890s	27004
Grey / White Card 20 x 25cm GC1890	27003
Grey / White Card 30cm	27001
Grey / White Card 56cm	27002
Three matt patches on cardboard GC3	27007

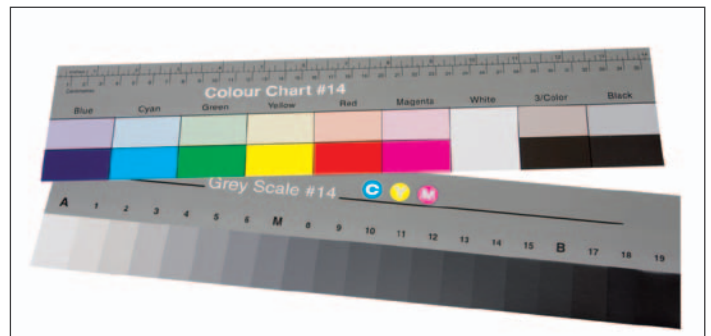


Colour chart with reference data on CD. Compatible with ICC profiling softwares and IMATEST.

Type	Code
Colour chart BST11	27011
Colour chart - big size BST11	27012
Colour and Grey Scale BST13	27009
Colour and Grey Scale - a big size BST14	27010



Danes Picta BST11



Danes Picta BST14

**DYNAPHOS** is an official partner and distributor of some of the world's best photo brands.



Profoto - Global standard, recognized all over the world.



Lastolite - Wide range of accessories for manual and studio flashes.



Benro - Wide variety of high quality photo and video tripods, heads, video rigs and accessories.



Manfrotto - Tradition, innovation, constant high quality from the most popular tripod supplier.



Sekonic - The leader in the world of exposure & color meters.



PocketWizard - The industry leader in radio triggering.



Colorama - Wide range of high quality paper backgrounds.



Pixel - Huge range of radio triggers, remote shutter release and other accessories.



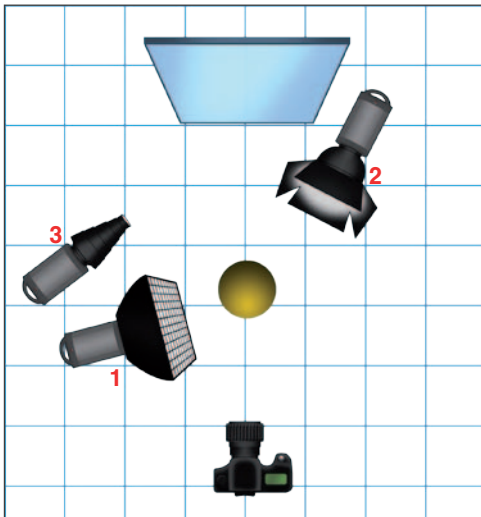
### Citronade

The photo is a typical example for the capabilities of Speedster 400Q.

The use of flashes with short flash duration allows you to "freeze" the motion in your photos and to increase your creativity.

#### Used gear:

1. Speedster 400Q flash + 40x60 Deep softbox with grid.
2. Speedster 400Q flash + 18cm standard reflector + 18cm barndoor kit with honeycombs and color filters (with mounted yellow gel).
3. Speedster 400Q flash + non optical snoot.



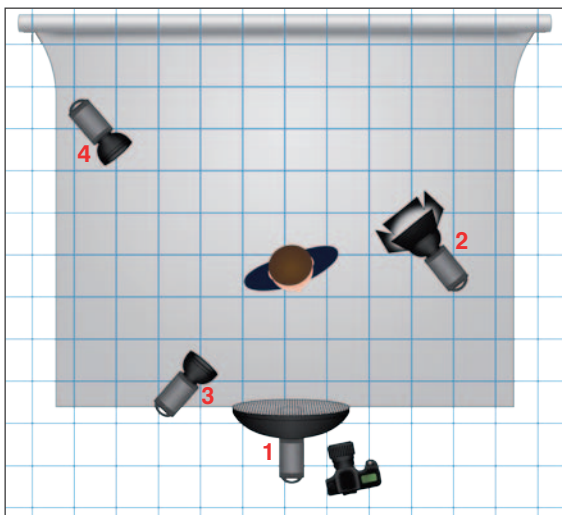
Author: Boris Bishkov, bishkov@dynaphos.com

### Nikolay Mihaylov - portrait

Petar Todorinski is a photographer specialized in the area of beauty & glamour photography. In this photo his model is the goalkeeper of the bulgarian football team. The photographer used 4 different flashes to achieve these harsh lighting spots that resemble the stadium lights.

#### Used gear:

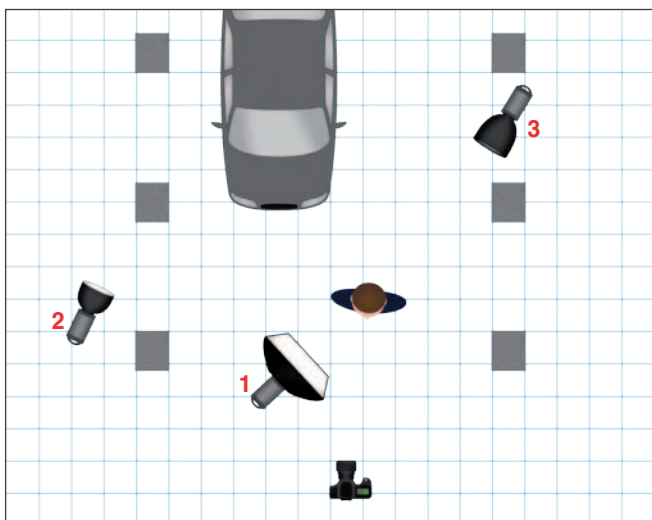
1. Expert 600 flash + 55cm beauty dish with silver surface and grid.
2. Expert 600 flash + 17cm standard reflector and 18cm barn-door kit with honeycombs.
3. Expert 600 flash + 17cm standard reflector with honeycomb M size.
4. Expert 600 flash + 17cm standard reflector with honeycomb M size.



Author: Peter Todorinski, www.todorinski.com

## Cinema portraits

Andrey Rashev's long experience as a cinematographer reflects on his distinctive style. Andrey made this photo for his project "Cinema portraits".



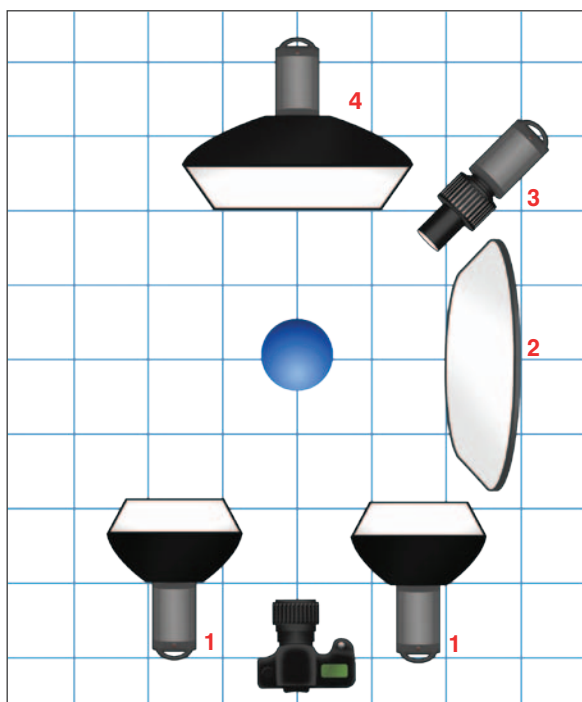
Author: Andrey Rashev, [www.rashev-photography.com](http://www.rashev-photography.com)

### Used gear:

1. Dynaphos Discovery 600 battery powerpack + 60x90 Softbox.
2. Dynaphos Proline 800 + 25.5cm(65°) Deep reflector and honeycomb M size
3. Dynaphos Proline 800 + 28cm(45°) Deep reflector and honeycomb S size.

## Composition with cosmetic products

Resize studio (Nikolay Abadjiev and Plamena Koeva) is a creative team that is always searching for a different and innovative point of view. This photo is part of an advertising campaign. Nikolay and Plamena created a sophisticated, multispot lighting composition in their attempt to achieve a spectacular vision.



Author: Resize Studio, [www.resizestudio.com](http://www.resizestudio.com)

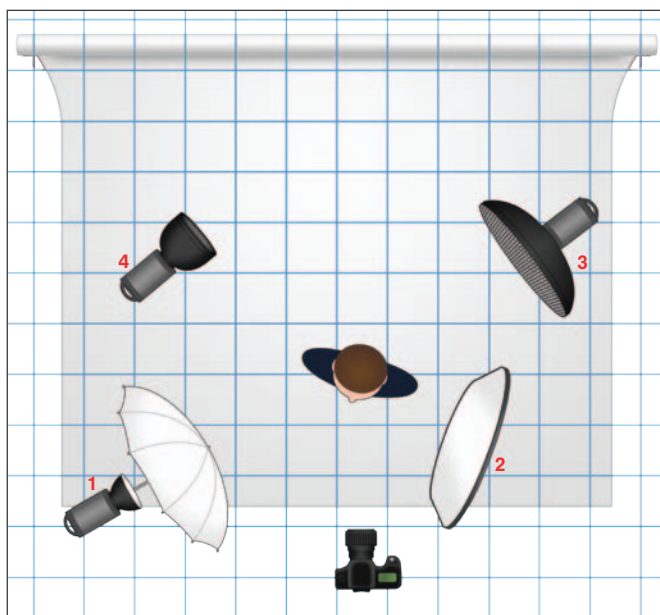
### Used gear:

1. Dynaphos Proline 400 flashes + 60x60cm Softbox
2. Dynaphos Proline 400 flash + Optical spot
3. Dynaphos Proline 800 flash + 70x140cm Softbox
4. Reflective disc 5 in 1 91x122cm(the white surface is used)

## Examples

**Children portrait**

Kalina Arsova is a photographer specialized in the children photography. She uses classical lighting compositions to achieve her signature style and the distinctive visions in her photos.



Author: Kalina Arsova, [www.kalinamesnima.com](http://www.kalinamesnima.com)

**Used gear:**

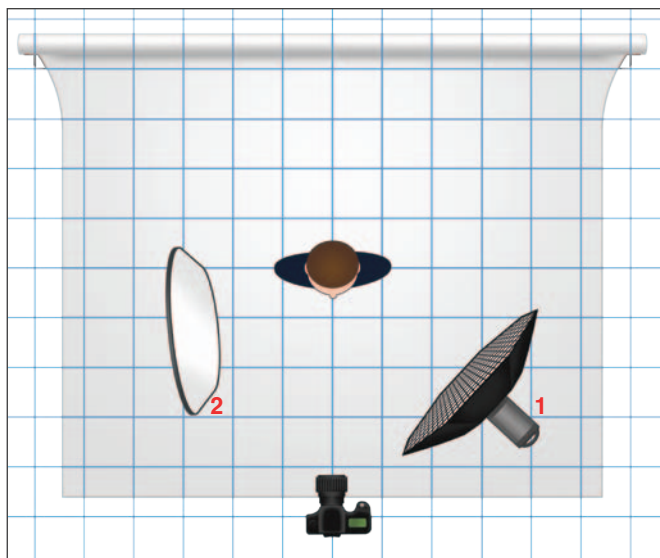
1. Dynaphos Craftline 400 studio flash + 105cm Fibro shoot-through umbrella.
2. Reflective disc 110cm 5 in 1 (The silver surface is used)
3. Dynaphos Craftline 400 studio flash + 55cm Beauty dish (silver surface) and grid.
4. Dynaphos Craftline 400 studio flash + 25.5cm Deep reflector and a honeycomb.

**Fashion in low key**

Diliana Florentin is one of the most popular fashion photographers in Bulgaria. In the studio she uses mostly simple, but very finely tuned light composition. The picture you see is made with just one studio flash.

**Used gear:**

1. Dynaphos Starter 400 flash + Octa softbox 95cm with grid
2. Polydisc 5 in 1 - 150x200cm



Author: Diliana Florentin, [dilianaflorintin@gmail.com](mailto:dilianaflorintin@gmail.com)

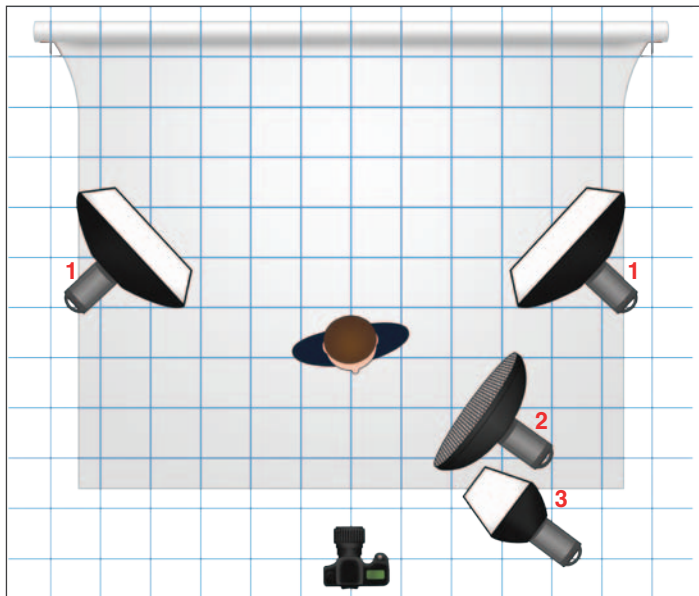


## Hi key photography

With many years of experience and constant striving for perfection, photographer Peter Peshev easily achieved completely "white" background when using high-key as a vehicle for their work. Due to his vast experience and constant searching for perfection, Petar Peshev easily achieves a completely "white" background when he uses the hi key to enhance the expression in his photos.

### Used gear:

1. Dynaphos Expert 300 flash + 80x120 Softbox.
2. Dynaphos Expert 600 flash + 70cm beauty dish with silver surface and a honeycomb.
3. Dynaphos Expert 600 flash + 35 x 140cm Deep strip softbox (with a detached grid).



Author: Petar Peshev, [www.petarpeshev.com](http://www.petarpeshev.com)

## Inspired by the twelve labours of Hercules

Lyubomir Sergeev is an art photographer that always explore the boundaries. For his unconventional approach to the photographic art he received recognition in many countries. Alongside the specific arrangement of the scene for the illumination of this large composition author has used five different light sources (flashes).

### Used gear:

1. Dynaphos Expert 600 flash (2pcs.) + 60x90cm Softbox.
2. Dynaphos Expert 600 flash + 60x60cm Softbox.
3. Dynaphos Discovery 1200 battery power pack kit + 60x60cm Softbox.
4. Dynaphos Discovery 1200 battery power pack kit + 18cm standard reflector.



Author: Lyubomir Sergeev, [www.sergeevstudio.com](http://www.sergeevstudio.com)

- **Search and shop from our online shop**
- **Always look for our regular promo proposals**
- **Choose one of our offers for studio kits or use the interactive configurator to build a studio kit on your own**
- **Check and read our article and online lessons for studio photography**
- **Bring your ideas to life and enjoy your photography**
- **Contact us at [info@dynaphos.com](mailto:info@dynaphos.com)**

DYNAPHOS LTD

2 Alexander Fol str.  
Sofia, Bulgaria  
Phone: +359 2 971 95 75  
+359 888 254 651

**[WWW.DYNAPHOS.COM](http://WWW.DYNAPHOS.COM)**